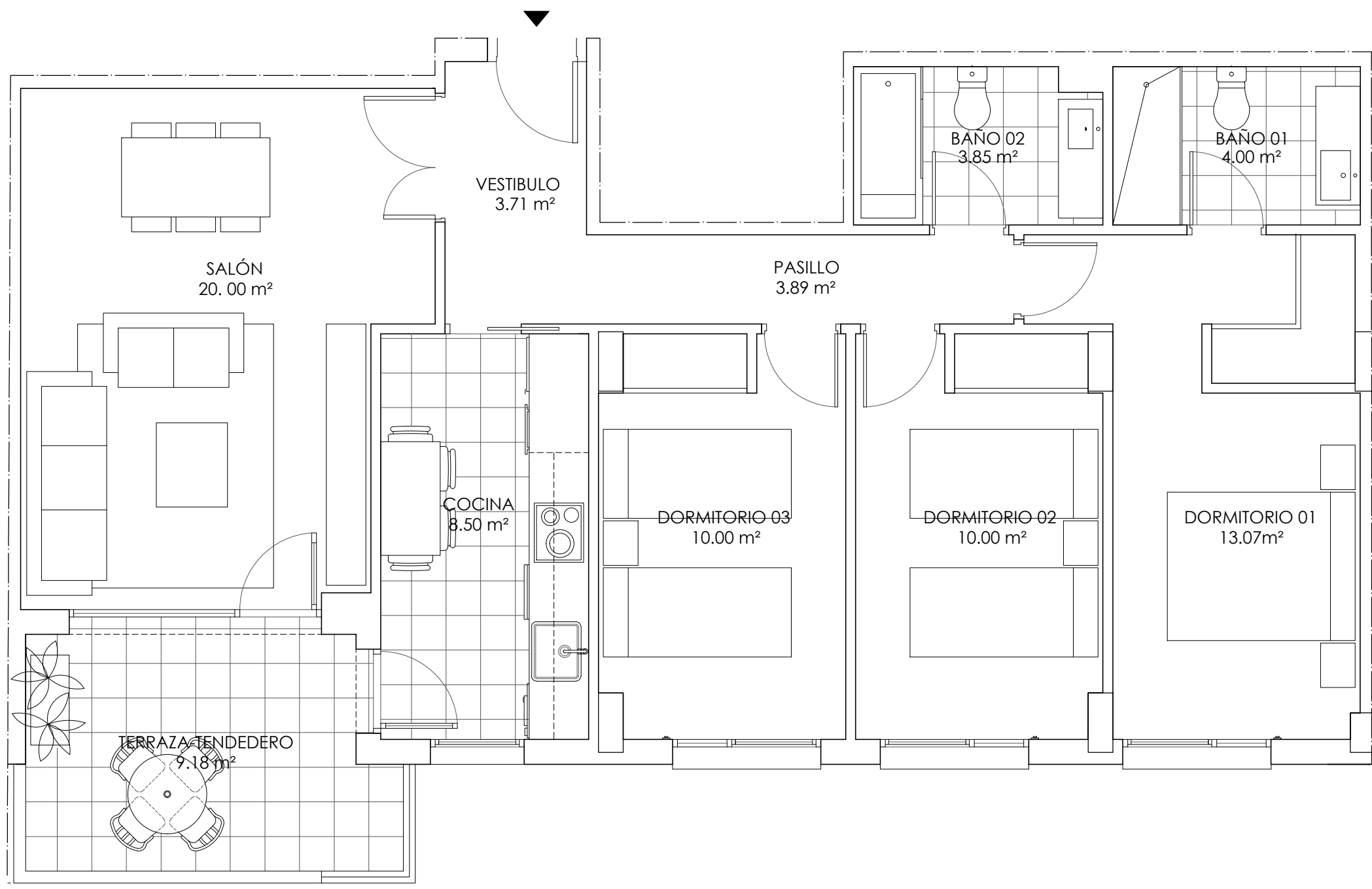
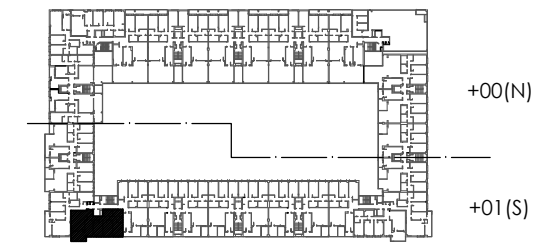
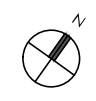


RESIDENCIAL UNIQUE
E12 1º B



SUPERFICIES ÚTILES REALES		
INTERIOR	ESPACIOS EXTERIORES	TOTAL
77.02 m ²	9.18 m ²	86.20 m ²

SUPERFICIES ÚTILES VPPL		
INTERIOR	ESPACIOS EXTERIORES	TOTAL VPPL
77.02 m ²	4.59 m ²	81.61 m ²



Fecha: 3 de junio de 2016

Plano meramente orientativo susceptible de modificación