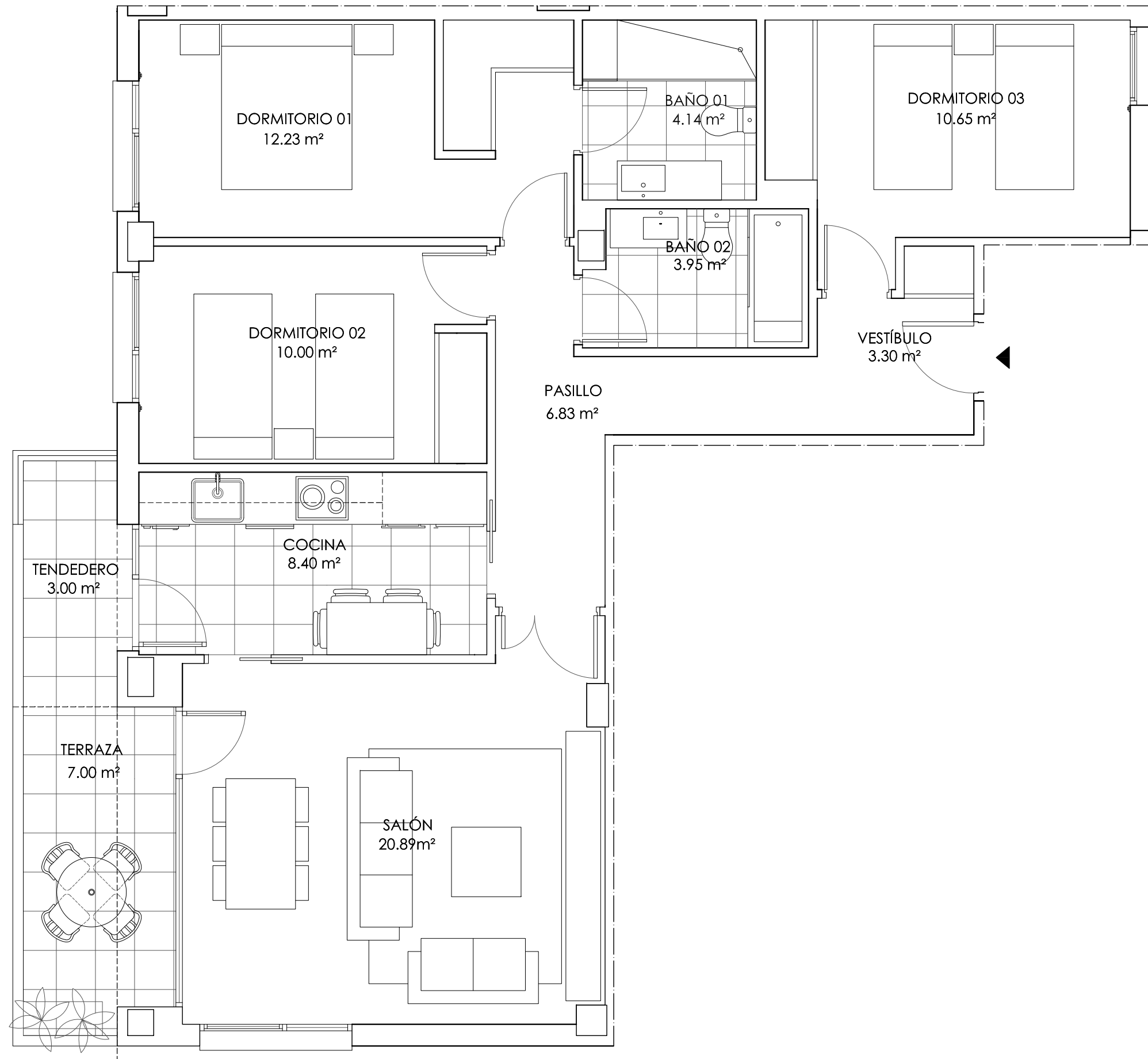


RESIDENCIAL UNIQUE
E12 1º C



SUPERFICIES ÚTILES REALES		
INTERIOR	ESPACIOS EXTERIORES	TOTAL
80.39 m ²	10.00 m ²	90.39 m ²

SUPERFICIES ÚTILES VPPL		
INTERIOR	ESPACIOS EXTERIORES	TOTAL VPPL
80.39 m ²	5.00 m ²	85.39 m ²

