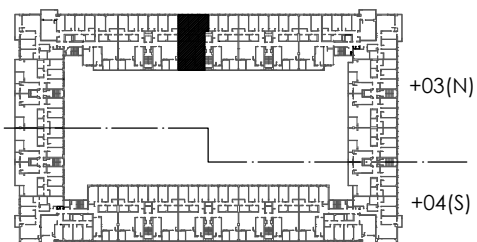
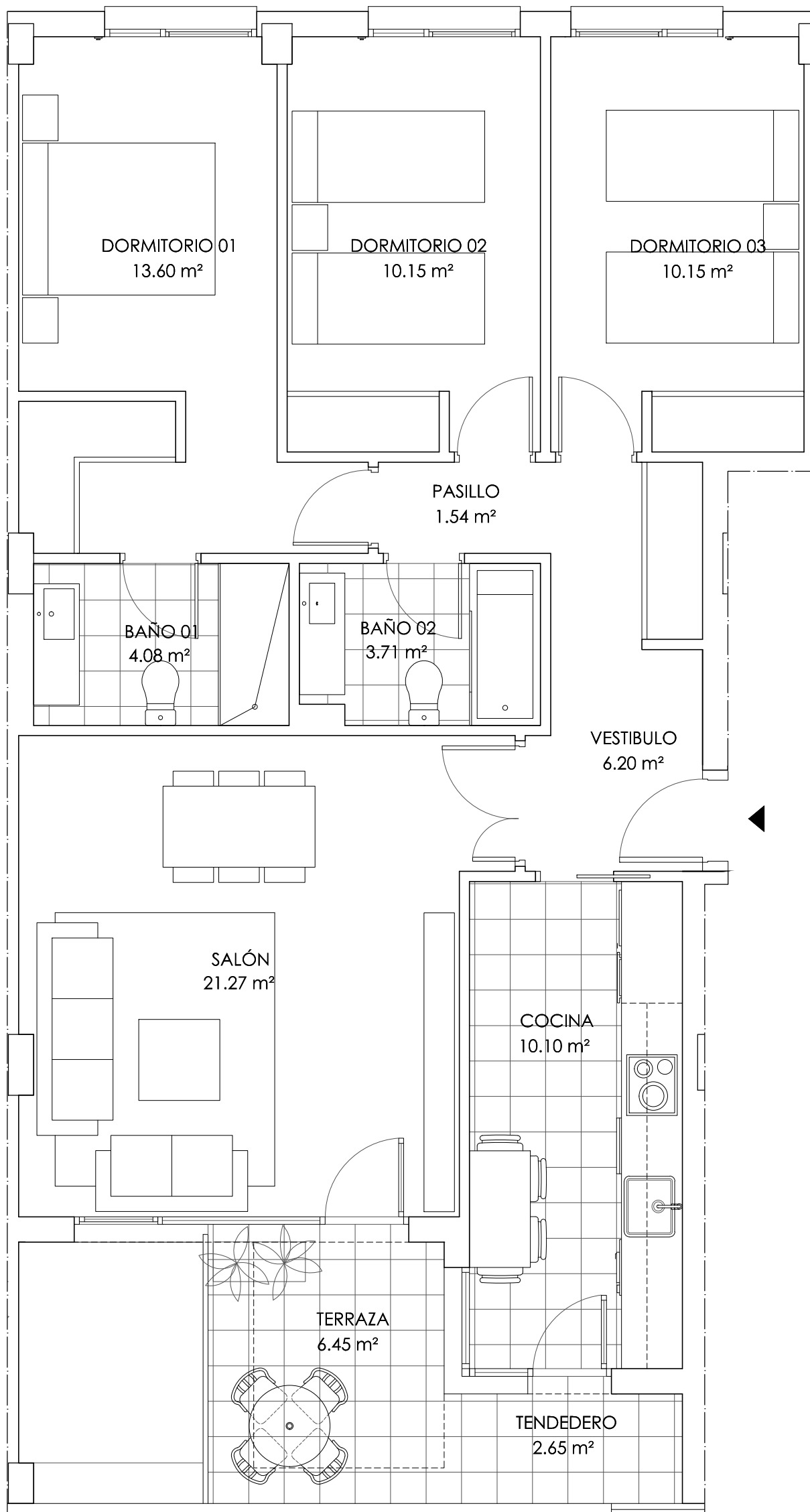


RESIDENCIAL UNIQUE

E03 3º A

| SUPERFICIES ÚTILES REALES |                     |                      |
|---------------------------|---------------------|----------------------|
| INTERIOR                  | ESPACIOS EXTERIORES | TOTAL                |
| 80.80 m <sup>2</sup>      | 9.10 m <sup>2</sup> | 89.90 m <sup>2</sup> |

| SUPERFICIES ÚTILES VPPL |                     |                      |
|-------------------------|---------------------|----------------------|
| INTERIOR                | ESPACIOS EXTERIORES | TOTAL VPPL           |
| 80.80 m <sup>2</sup>    | 4.55 m <sup>2</sup> | 85.35 m <sup>2</sup> |



Fecha: 3 de junio de 2016

Plano meramente orientativo susceptible de modificación